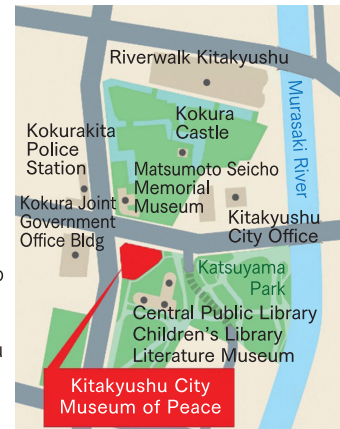




#### ▶ Access

- By Train  
Approx. 10-min. walk from  
JR Nishi-Kokura Station
- By Bus (Nishitetsu Bus)  
Approx. 1-min. walk from  
Chuo Public Library  
Bungakukan-mae Bus Stop
- By Car  
Approx. 2-min. from  
Katsuyama IC on Kitakyushu  
Urban Expressway

\*There is no museum parking lot.  
Please use the nearby municipal  
parking lot.



#### ▶ Information

- Open hours  
9:30 am ~ 6:00 pm (entry until 5:30 pm)
- Closed  
Mondays (Tuesday if Monday is a public holiday),  
year-end and New Year holidays
- Admission

| Category                               | Admission Fee |                                 |                            |
|--|---------------|---------------------------------|----------------------------|
|  | General       | Junior and high school students | Elementary school students |
| Individual                             | 200 yen       | 100 yen                         | 50 yen                     |
| Group<br>(group of 30 or more persons) | 160 yen       | 80 yen                          | 40 yen                     |

#### ▶ Note

- Group admission applies to groups of 30 or more paying guests.
- No eating or drinking in the exhibition area.
- Turn off cell phones or put them in silent mode in exhibition rooms.
- Do not touch the glass exhibition case. Do not put things on the exhibition case.
- Please keep your voice down.
- Only pencils are allowed for taking notes in exhibition rooms.
- No pets allowed with the exception of assistance dogs.
- No smoking in the building.
- Visitors who are intoxicated will not be allowed entry.
- Hazardous and dangerous items are strictly prohibited.
- Taking photographs is allowed unless otherwise noted; however, flash photography is prohibited.

Kitakyushu City

## Museum of Peace

4-10 Jonai, Kokurakita-ku, Kitakyushu-shi, 803-0813  
TEL: 093-592-9300 FAX: 093-592-9305  
URL: [www.kitakyushu-peacemuseum.jp](http://www.kitakyushu-peacemuseum.jp)

Visit our  
website  
from  
here



Kitakyushu City Museum of Peace

**Official LINE Account**

To add the LINE official account as a friend ▶



Kitakyushu City Printed Material Registration No. 2208035C

# Kitakyushu City Museum of Peace

English



## Facility Concept

### Concept 1

Preserve and pass on material that tells people's experiences during the war and their lives at that time.

### Concept 2

Provides opportunities to think about the misery of war, the importance of peace, and the preciousness of life.

During the war in the Showa Era (1926~1989), Kitakyushu was targeted in air raids 13 times, including the major air raid on Yahata. Kokura Army Arsenal Factory, where this museum stands today, was the originally planned target of the atomic bomb that was dropped on Nagasaki.

More than 70 years since the end of the war, most people today have never experienced war or the miserable life caused by war. We should remember that we live in peace and prosperity built on the foundation of uncountable precious lives lost in the war.

The museum hopes that the exhibition will give visitors the opportunity to think about the misery of war, the importance of peace, and the preciousness of life.

Kitakyushu City Museum of Peace



### 2 The War and the Lives of the People

This section features a re-creation of the family lives at the time, and actual documents showing the lives led by children. You can see that the people's lives were at risk because of the war.



### 1 Kitakyushu before war

This section introduces the features of the former five cities in Kitakyushu, the vibrant lives of the people, the prosperity of Kitakyushu before the war, and the involvement of Kokura and the army. Projection mapping realistically recreating Kokura Army Arsenal Factory is a must-see.

Featuring actual documents and making use of the most advanced video and sound technologies, Kitakyushu City Museum of Peace exhibits are sure to stay in the minds of visitors.  
(Time required for the visit: 40 ~ 60 minutes)



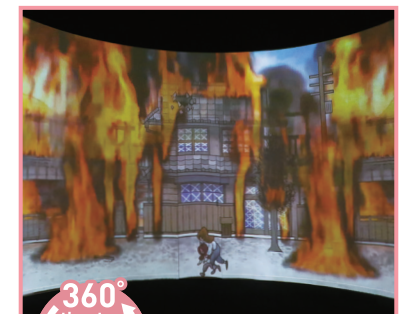
### 4 Chaos and restoration after the war

Video presentation of the path to restoration by the former five cities in Kitakyushu. Visitors can see the redevelopment, the birth and the transition of Kitakyushu City.



### 3 Expanding war and air raids

This exhibition shows the spread of war damage and the documents related to air raids that impacted people's lives. Visitors can see valuable materials such as photographs taken at the time, and reproduction of life-size incendiary bomb.



### The fatal day: August 8th and 9th, 1945

Dynamic 360-degree theater. Yahata was hit by a major air raid on August 8, 1945, and on the following day, a bomber carrying the atomic bomb flew over Kokura on its way to Nagasaki. Experience the event as if you were there.

\*Exhibition and installations may change without advance notice.